



# Kalama® 3-Phenyl Propanol FCC

CAS No.: 122-97-4 EC No.: 204-587-6  
 $C_9H_{12}O$   
 INCI: Phenylpropanol

## Multifunctional aromatic alcohol for personal care & cosmetics

### Multifunctional properties:

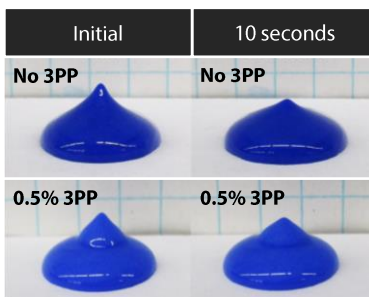
- Enhanced cleansing power and make-up removal
- Improved formulation stability
- Synergy with sodium benzoate to boost antimicrobial efficacy
- Fragrance
- Solvent
- Texture modifier (increased shape integrity)
- Emollient
- Moisturizing agent
- Process aid

## Multifunctional Solution to Elevate Performance in Personal Care

Multifunctionals enable formulators to meet needs for **clean label solutions** by achieving multiple performance benefits with a single ingredient, reducing the number of ingredients on the label.

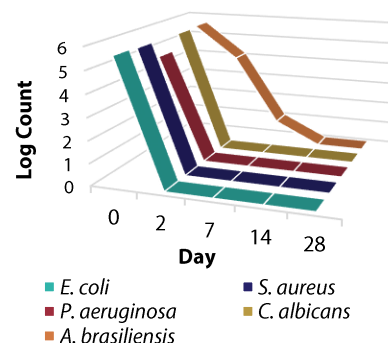
Kalama® 3PP enhances a range of attributes to optimize performance in personal care. It has synergy with Purox® S and Kalama® Sodium Benzoates, extending **antimicrobial efficacy in challenging formulations** and higher pHs. It enhances **make-up removal** in cleansing products. Incorporation in lotions has shown **increases in viscosity and integrity of shape characteristics**, and it acts as an **emollient**. It also acts as a **process aid**, improving ingredient solubility and reducing dissolution times and temperatures, which **saves energy** in production. It has a pleasant odor, compatible with personal care fragrances. Because it is a colorless liquid, Kalama® 3PP can be easily incorporated into personal care products.

### Improved Shape Characteristics



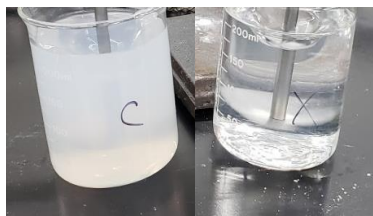
Improved viscosity and shape characteristics were observed in a light lotion with 0.5% Kalama® 3PP, enhancing sensory experience.

### Enhanced Preservation Robustness



Kalama® 3PP enhances antimicrobial efficacy of registered preservatives, exhibiting synergy with sodium benzoate. In a **skin lotion at pH 6, 0.5% sodium benzoate and 0.5% 3PP** effectively controlled bacteria, yeast, and mold.

### Enhanced Dissolution



◀ Sodium coco fatty alcohol sulfate typically requires 10 min. at 40°C to dissolve in water (left). 1% Kalama® 3PP aids in room temp. solubilization in < 5 min. (right).

Typical Properties	
Form	Colorless liquid
pH range of efficacy	2.0 – 10.0 +
Assay	98.0% minimum
Visual Description	Colorless liquid
Flash Point	>100°C (>212°F) estimated
Solidification Point	-18°C (-0.4°F)
Refractive Index (20°C)	1.524 – 1.528
Specific Gravity (25°C)	0.998 – 1.002
3-Phenyl Propionaldehyde	0.5% maximum
Produced At	Kalama, Washington, USA

*Above properties are typical of 3-phenyl propanol and should not be confused with, or regarded as, sales specifications.*

### Produced to the Highest Standards for Purity and Safety

Kalama® 3PP is consumer friendly, clean label compatible, and nature identical. It is an FDA GRAS ingredient (21 CFR §172.515) that is produced to meet FCC specifications under a quality and safety management scheme certified to ISO 9001:2015 and FSSC 22000.

### Packaging and Handling

Standard package size: 200 kg (441 lbs). This product is easily oxidized, and measures should be taken to protect the product from exposure to air. When storing drums or samples, the product should be “padded” with dry nitrogen or another inert gas. This product should be handled using the safe handling practices normally accorded with the handling of organic chemical compounds, including avoidance of contact, adequate ventilation, and cleanliness.

### Shelf Life

The recommended retest date is 12 months from the date of manufacture. If the drum or tote has been unopened, properly stored, and the product tested to confirm quality, it may be possible to extend the retest date to a maximum of 24 months from the date of manufacture.

### About Emerald

Emerald Kalama Chemical is a leading global supplier of benzoic acid, benzaldehyde, and related downstream chemistries, with world-scale, backward integrated facilities in the U.S. and Europe. Products include benzoate preservatives, intermediates, flavor and fragrance ingredients, plasticizers, coalescents, industrial antioxidants, and accelerators.

*Kalama® 3PP is also available through our distribution partners. Please contact us for additional information.*

#### Customer Service – Americas

Emerald Kalama Chemical, LLC  
1499 SE Tech Center Place, Suite 300  
Vancouver, WA 98683 USA  
**+1.800.223.0035** or **+1.360.954.7100**  
**kalama@emeraldmaterials.com**

#### Customer Service – EMEA

Emerald Kalama Chemical, BV  
Fascinatio Boulevard 200-232  
3065 WB Rotterdam, The Netherlands  
**+31.88.888.0500**  
**purox.info@emeraldmaterials.com**

#### Customer Service – Asia Pacific

Emerald Performance Hong Kong  
1708 Shui on Centre, 6-8 Harbour Road  
Wanchai, Hong Kong  
**+852.2598.7990**  
**kflex.asia@emeraldmaterials.com**