



CAS No.: 532-32-1 EC No.: 208-543-8

$C_6H_5CO_2Na$

High purity preservative for home care applications with an effective combination of antimicrobial action, low cost, and safety.

#### Applications include:

- Household cleaners
- Laundry care and fabric softeners
- Dish washing liquids
- Household care wipes

#### Kalaguard® SB: Consumer Friendly Preservation

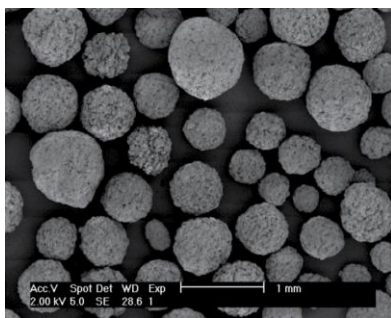
Kalaguard SB is a nature identical, non-irritating, biodegradable solution to preserve freshness and maintain the integrity of household care formulations, **controlling yeasts, molds, and bacteria in products up to pH 7.0.**

Sodium benzoate has been globally used as a preservative for many years in applications such as foods, beverages, and personal care. As consumer demand for **labels free of sensitizers, parabens, and formaldehyde donors** has increased, a rising number of formulations have incorporated sodium benzoate, which provides **proven product protection with the comfort of a green footprint.**

Now, sodium benzoate is available to homecare formulators for the first time as Kalaguard SB. It is **easily incorporated** in formulations such as household cleaners, dish washing liquids, wipes, laundry detergents, fabric softeners, and air fresheners, where it provides an **optimal balance of preservative efficacy, economy, and a consumer friendly profile.**

#### High Quality Ingredients from a Reliable Global Supplier

Emerald Kalama Chemical is a **trusted global leader in benzoic acid**, supplying the **highest purity available at 99.9% minimum.** Kalaguard SB is produced using Emerald's benzoic acid at our world-scale facility in Rotterdam, Netherlands, using the highest standards for quality, purity, and responsible manufacturing, including ISO 9001:2015 and ISO 14001:2015.



*The narrow particle size distribution of Kalaguard SB offers consistent processing characteristics, with dust-free production and good dissolution properties.*





Characteristic	Spec. Range	Unit
Form	White grains, dust-free	
Odor	No off odor	-
Assay (on dried product)*	99.9 min.	% (m/m)
Loss on drying	0.5 max.	% (m/m)
Color (10% [m/m] solution in water)	5.0 max.	APHA
Insoluble matter	To pass test	-
Biphenyls	3 max	mg/kg
Phthalic acid	50 max.	mg/kg
Degradation point	410 – 430	°C

\* Assay = 100% - total organic impurities

### Packaged to Meet Your Process Needs

Kalaguard® SB is available in a choice of packaging formats to meet specific process requirements.

The product is packaged in robust, tamper-proof 25 kg form-fill-sealed polyethylene bags filled on an automated packaging line. This packaging protects Kalaguard SB against contamination and guarantees an extended shelf life by excellent moisture barrier properties.

### About Emerald

Emerald Kalama Chemical is a leading global supplier of benzoic acid, benzaldehyde, and related downstream chemistries, with world-scale, backward integrated facilities in Kalama, Washington (USA), Rotterdam, Netherlands, and Widnes, UK. Products include benzoate preservatives, intermediates, high purity flavor and fragrance ingredients, plasticizers, coalescents, antioxidants, and accelerators. With manufacturing in the United States and Europe and a global sales and distribution network, we serve customers globally.

*Kalaguard SB is also available through our distribution partners. Please contact us for additional information.*

**SHELF LIFE: 2 YEARS**

Kalaguard SB is not for food, feed, or pharmaceutical use and is intended for applications governed by the BPR (EU 528/2012) or U.S. EPA FIFRA. Use biocides safely. Always read the label and product information before use.

#### Customer Service – Americas

Emerald Kalama Chemical, LLC  
1499 SE Tech Center Place, Suite 300  
Vancouver, WA 98683 USA  
**+1.800.223.0035 or +1.360.954.7100**  
**kalaguard@emeraldmaterials.com**

#### Customer Service – EMEA

Emerald Kalama Chemical, BV  
Fascinatio Boulevard 200-232  
3065 WB Rotterdam, The Netherlands  
**+31.88.888.0500**

#### Customer Service – Asia Pacific

Emerald Performance Hong Kong  
1708 Shui on Centre, 6-8 Harbour Road  
Wanchai, Hong Kong  
**+852.2598.7990**



[www.emeraldkalama.com](http://www.emeraldkalama.com)